

PART OF N.E. 1/4 SEC. 10, T. 5 N., R. 1 W., S.L.B. & M.  
**ENGLAND HILLS SUBDIVISION**

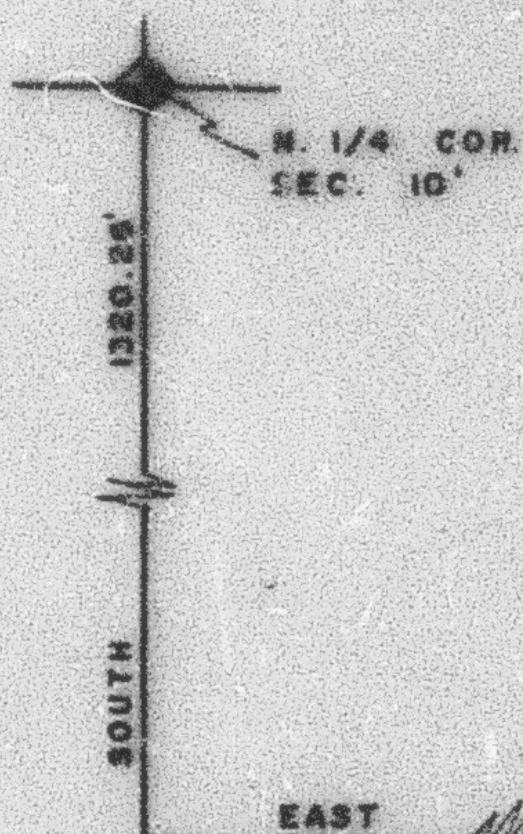
149

TAXING UNIT: 25

IN OGDEN CITY

PREFIX: 06-149

SCALE 1" = 50'



SEE PAGE 95

SEE PAGE 86-1

SEE PAGE 88

SEE PAGE 90

FOR COMPLETE ENG. DATA  
 SEE ORIG. DEED PLAT IN  
 BOOK 19, PAGE 10

SEE PAGE  
 86-1

